



EXTENDING BEYOND

Making our way

By Mike Sherrill *



Since the day it was established, 20 years ago, Mennonite Mission Network has been striving to follow Jesus' teachings and avoid approaches to mission that rely on colonial systems. It's

a God-inspired core value that was handed to us by forebearers, such as J.D. Graber, Ed and Irene Weaver and Wilbert R. Shenk, my mentor.

When I received the torch from Stanley W. Green and began as executive director in 2020, the resilience of Mission Network staff was an important aspect of the agency. Recognizing the strain of the pandemic, we decided to create an all-staff weekly meeting for fellowship, scriptural devotion and mutual support. At our first meeting, I shared two Scriptures:

**"We are hard pressed on every side, but not crushed; perplexed, but not in despair."
— 2 Corinthians 4:8 (NIV)**

"I am about to do a new thing; now it springs forth; do you not perceive it? I will

make a way in the wilderness and rivers in the desert." — Isaiah 43:19 (NRSVUE)

At that time, we could not have imagined that the pandemic would continue for two years and beyond. With God's grace, our shared creativity and commitment has enabled us to not only survive but thrive. It has enabled us not only to adapt but innovate.

Mission Network pivoted to leverage our digital capacity to maintain and expand our programs and partnerships. After months of sharing, discussion and prayer, a shared sense of the need for structural change arose across the organization. In this forward movement, we are honoring the past, acknowledging the present, and building on our legacy to include new opportunities for us to serve the needs of our constituency and partners across the street and around the world.

Mission Network staff worked diligently at anti-racism training, reflection and personal growth. We launched our Diversity, Equity, Inclusion (DEI) Team to more systematically shape Mission Network's continual goal to be

Continued on page 4

As Mennonite Mission Network celebrates its 20th anniversary, we look back on the hopes and dreams of the original staff. We have been building on what they, and others, have accomplished, and we are moving forward in new and exciting ways! Photo by David Fast.

"I am about to do a new thing; now it springs forth; do you not perceive it? I will make a way in the wilderness and rivers in the desert"

— Isaiah 43:19 (NRSVUE)



Photo by Ann Jacobs

Mennonite Mission Network and Mennonite Women USA explored issues of diversity, equity and inclusion during the 2022 "Leaders Inspiring Leaders: Women of Faith Conference."

Department highlight:

Supporting the missional church

By Joani Miller *



DIRECTOR

The newly formed Training and Resources department seeks your prayerful support, as we provide learning experiences and opportunities. Our hope is to structure our focus on Acts 11:19-30 and how it describes the church. We will use this Scripture to define the missional church, using 4 M's: maturing, multiplying, mutual and multiethnic.

- **Maturing:** a church devoted to the apostles' teaching and fellowship, to the breaking of bread and prayers
- **Multiplying:** a church devoted to embodying and explaining God's love for the world.
- **Mutual:** a church devoted to building the

leadership capacity of its members, according to the gifts given to each.

- **Multiethnic:** a church devoted to just relationships across cultures, as one body.

As we align learning opportunities within this structure, our goal is to add new content, update our current content, offer varied learning means (in-person or online, live or recorded, etc.). We hope to create learning that meets the specific needs of the learner and to provide coaching and mentoring opportunities, so the learning can be better applied, versus staying theoretical. ■

Joani Miller

Joani Miller
Director of Training and Resources



Marisa Smucker *
Senior Executive of Ventures



Marcella Hershberger
Divisional Coordinator for Ventures



The Sent Network provides online training for church planters. Enviados provides the same training for Spanish speakers.

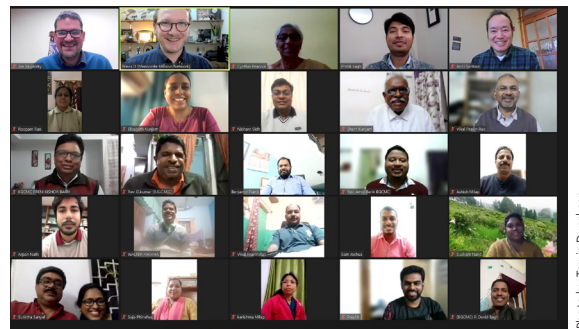


Photo by Travis Duerksen

A virtual Anabaptist educational event about baptism in India, organized by Mennonite Mission Network, Anabaptist Mennonite Biblical Seminary and Mennonite Christian Service and Fellowship of India.

Training and Resources



Mauricio Chenlo *
Training and Resources
Specialist — Church Planting



Ann Jacobs *
Training and Resources
Specialist — Urban Ministries



Alexander Mace
Department Coordinator for
Training and Resources &
Constituent Engagement



Henok Mekonin
Training and Resources Assistant



Joe Sawatzky *
Training and Resources
Specialist — Mission Education

Constituent Engagement

Constituent Engagement strives to create fellowship and strengthen relationships across the global church by inviting constituents to experience service opportunities and resources.



Ana Alicia Hinojosa *
Director of Constituent
Engagement
*Regions: Gulf States, Pacific
Northwest, South Central,
and Mennonite conference
churches*



Naun Cerrato *
Constituent Engagement
Representative
*Regions: Central District,
Indiana-Michigan, Mosaic and
Western District Mennonite
conference churches, and Iglesia
Menonita Hispana*



Gloria Guadarrama
Project Coordinator for
Constituent Engagement and
Training and Resources



Sara Gurulé *
Constituent Engagement
Representative
*Regions: Allegheny, Atlantic
Coast, Mountain States, New York
and Pacific Southwest Mennonite
conference churches, and
Indigenous Relations Partner*



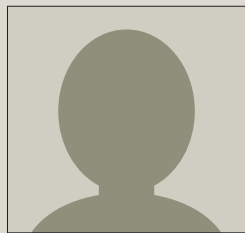
Eric Frey Martin *
Constituent Engagement
Representative
*Regions: Central Plains, Illinois,
Ohio and Virginia Mennonite
conference churches, and
Mennonite Education Agency
Liaison*

Global Partnerships

Global Partnerships connects with and supports Anabaptist churches, communities and organizations across the street and around the world.



Andrew Suderman *
Director of Global Partnerships



Lori Blair
Department Coordinator for
Global Partnerships



Arloa Bontrager
Regional Co-Administrator
for North America (Short-term
Service: SOOP and Youth Venture)



Naomi Leary *
Regional Co-Administrator for North
America (Longer-term Service: MVS
and Service Adventure)



Andi Santoso *
Regional Administrator for Asia/
Middle East



Linda Shelly *
Regional Administrator for Latin
America



Stephanie Weaver
Program Assistant



Steve Wiebe-Johnson *
Regional Co-Administrator for
Europe and Africa

* Request a speaker!

Mennonite Mission Network staff would love to join your congregation in worship, to preach, teach and share stories of God at work around the world. Whether you need a sermon or a Sunday-school leader, Mission Network can help. We can join you in-person, live through video chat or with a prerecorded message. We want to help you meet your congregational needs. Visit [MennoniteMission.net/speaker](https://www.mennonitemission.net/speaker).

As we continue to make our way, join with us to partner in God's kingdom-building mission. Your prayers and generosity support programs, ministries and partners across the street and around the world! Visit [MennoniteMission.net/Donate](https://www.MennoniteMission.net/Donate) to support these partnerships today!

Making our way

Continued from page 1

anti-racist and interculturally competent across the agency, internally and externally. The DEI Team assists the Executive Leadership Team (ELT) in reviewing and refining values, language, policies and programs, with a view to incorporate our learnings into our strategy, operations and activities.

As we drew near to the conclusion of our realignment, we engaged in a thorough strategic planning process to prepare us for 2022-2023. We began by reviewing the Mission Network Global Ends Statement: "People of all cultures are transformed by Jesus Christ." This has been, and continues to be, our "why" statement, our purpose statement. It goes further to state, "Across the street and around the world, people of all cultures encounter Anabaptist expression of the whole gospel of Jesus Christ." As a product of partnership, mission congregations and leaders are established and equipped to engage with their culture and world with the whole gospel of Jesus Christ.

We revitalized our organizational culture, considered new strategies and developed a strategic budget to fuel our work. Thanks to everyone's hard work, perseverance, prayers and commitment, we have completed our realignment process, and

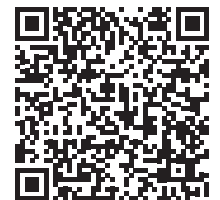
we have set sail on a journey of discovery in new open waters.

Mission Network personnel respond to invitations from, and partner with, organizations to work alongside them in service. Mission Network has been walking alongside partners and doing "mission with" them for the past 20 years. Collaborating in mission through partnership is the very heart of how we pursue our calling as an agency of mission.

As we commemorate our 20th anniversary, honoring our roots and looking ahead, I especially recommend looking at *Missio Dei* — *Walking Together in Mission*. This issue provides a helpful overview of what has been, and continues to be, our calling and identity as an agency partnering in God's kingdom-building mission. ■

Mike Sherrill

Mike Sherrill
Executive Director and CEO



[MennoniteMission.net/missiodei](https://www.MennoniteMission.net/missiodei)

Gratitude and blessings

A message from Karen Horsman *



As I reflect on the past year, my heart is filled with gladness and gratitude for how God has been working in and through Mennonite Mission Network to share all of Christ with all of creation. You, our donors, have provided unwavering generosity and encouragement. Mission Network

has been blessed by your gifts, which make an impact across the street and around the world.

Thank you for being part of what God is doing! How is God calling you to share in additional ways with Mennonite Mission Network?

Mission Network received an unexpected estate gift just before the end of 2022. The donor, not wanting public recognition, quietly and faithfully supported our ministry, and we are touched by her generosity. It is faithful support like this that motivates us daily.

As a new year begins, I wish you and your families the peace of Christ Jesus. Blessings to you all. ■

Karen W. Horsman

Karen Horsman
Director of Development

www.MennoniteMission.net
Toll-free: 1-866-866-2872

Office locations:
Elkhart, Indiana
Newton, Kansas

